

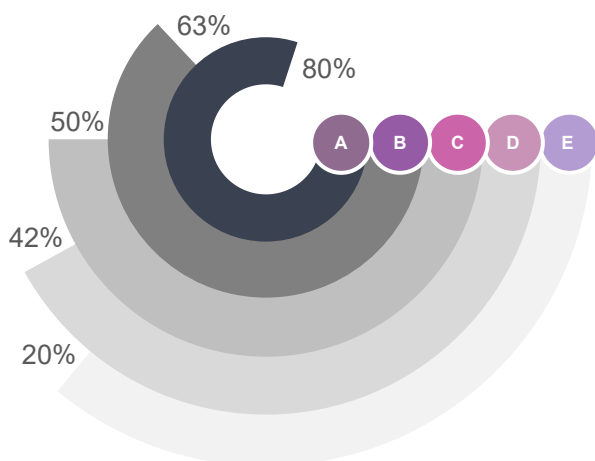




- With 20 years of experience in the industry, Zunli Medical has established ourselves as a reliable and trusted supplier of high-quality medical curtains to hospitals, clinics, and healthcare facilities both domestically and internationally.
- With three factories in China, Zunli Medical is well-equipped to meet the growing demand for disposable medical curtains by providing fast lead times, competitive pricing, and superior customer service.
- Global trade
- Dedicated manufacturer
- Eco-friendly Material
- Customizable Products

Global Trade

Our clients are from...



- (A) Europe
- (B) North America
- (C) South America
- (D) Africa
- (E) Australia

ZUNLI CURTAINS

- Standard Disposable Curtains
- Mesh Disposable Curtains
 - ◆ Perforated Mesh Disposable Curtains
 - ◆ Sewing Mesh Disposable Curtains
 - ◆ Snap-on Mesh Disposable Curtains
 - ◆ Zipper Mesh Disposable Curtains
- Disposable Shower Curtains



Standard Disposable Curtains



Anti Microbial

Flame Retardant

Integral Design

100% Recycling

Features

- ✓ Long lasting
- ✓ Breaks the chain of infection
- ✓ No laundry costs
- ✓ Lightweight
- ✓ Self-auditing & privacy labels
- ✓ 100% recyclable
- ✓ No track conversion
- ✓ Fire retardant

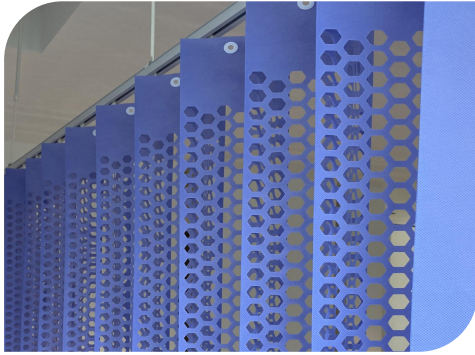


Ultrasonic Edge Sealing

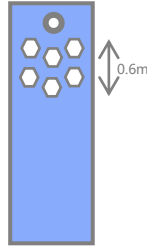
The ZunLi lockstitch technology is used to process the non-woven fabric at the first and last pages, which can effectively prevent the isolation curtains from becoming warped, wrinkled, and worn, thereby increasing the durability and aesthetics of the fabric.

Mesh Disposable Curtains

The mesh disposable curtain is an efficient, reliable, and safe choice for various medical settings. Here are our products, each of which can be customized with your preferred color, size, and style.



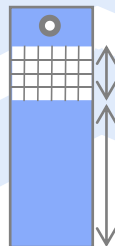
Punching Mesh Disposable Curtains



The length of the punched mesh part is available in 0.5m and 0.6m options, and the standard length of the entire disposable isolation curtain is 2.5m, with different sizes available for customization.



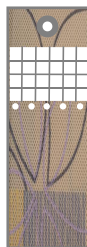
Sewing Mesh Disposable Curtains



Our disposable woven mesh disposable curtain consists of two parts: mesh and polypropylene nonwoven fabric. All can be customized according to requirements. Various colors and prints are available for selection. We also provide custom services if you provided us the design.



Snap-on Mesh Disposable Curtains



Snap-on panel disposable curtains are designed to be easy to install and are available in a range of colors/patterns and sizes to suit different needs. When replacing, only the lower panel part needs to be replaced, and the cost is also saved.



Zipper Mesh Disposable Curtains



Zipper connection curtain knows the importance of changing curtains frequently to save time and money, changing takes less than 60 seconds with no need for ladders or tools. The replaced panel with multiple color and pattern options.

Shower Disposable Curtains



The disposable shower curtain provided by Zunli is affordable and easy to replace, while also effectively preventing the spread of bacteria and viruses. Our use of new technology to improve its durability and antibacterial efficacy has earned us widespread recognition and praise from public places and medical institutions worldwide.

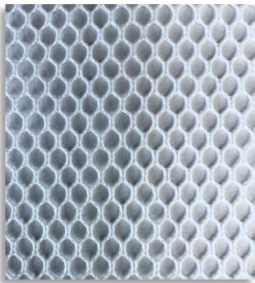
- Waterproof
- Mildew
- Anti- microbial
- Easy to clean
- Long service life

Customization

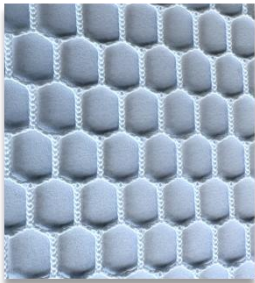
Curtain Dimensions

	Standard	Mesh top	Mesh cut	Longdrop
Height	2.0m	2.55m	2.55m	2.6m
Full width	7.5m	7.5m	7.5m	7.5m
Medium width	5.55m	5.55m	5.55m	5.55m
Half width	3.75m	3.75m	3.75m	3.75m
Pleat width	0.15m	0.15m	0.15m	0.15m

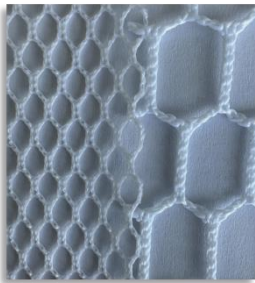
Mesh System



Small Mesh

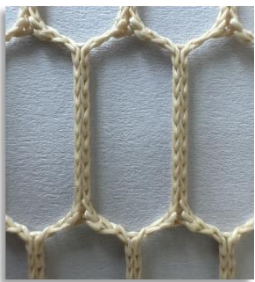


Big Mesh

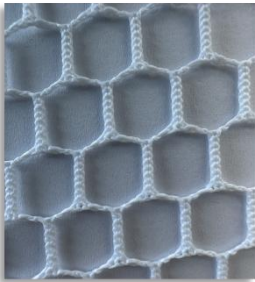


Comparison

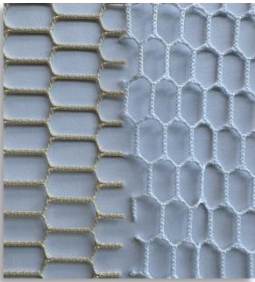
The size and color of the mesh net can be customized according to your preferences.



Beige



White



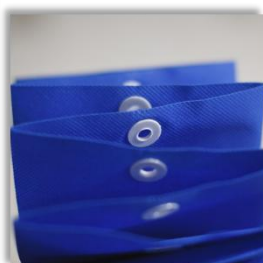
Comparison

If you have specific requirements, we can also customize the net in other colors for you.

Customization

“ If you are not satisfied with our standard disposable curtains, we offer customized services including but not limited to size, style, labels, and more. The following are some of the available customization options. ”

Hanging system



Eyelet



Easy-fit



U-fit



S-fit



Beads-ring

We can provide different hook styles to suit different tracks.

Test Methods

FLAME RETARDANT

NFPA 701:2010 (USA & Canada)

BS 5867 Part 2 Type C 2008 (UK & Europe)

AS/NZS 1530.3:1999 (Australia & New Zealand)

TEST METHOD

Flame applied for 30 seconds

TEST RESULT

- Flame ceased within 2.5 seconds
- No flame reached the edge

ANTI-MICROBIAL

AATCC100-2004

JIS L 1902:2002

JIS L 1902:2008

ISO 20743:2021

TEST METHOD

Staph aureus
E.coli

Staph aureus
K.Pneumonia

MRSA Staph aureus

Staphylococcus aureus

ORGANISM

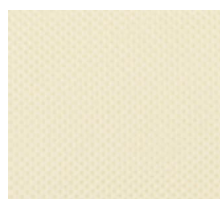
>99.99
>99.99

>99.99
>99.99

>99.99

>99.99

Solid Colors



Cream



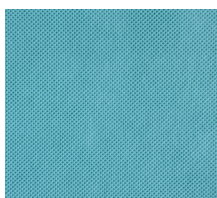
Taupe



Titanium



Mint



Lake Blue



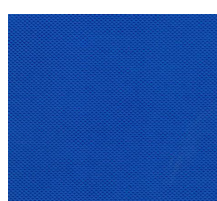
Medical Green



Sky Blue

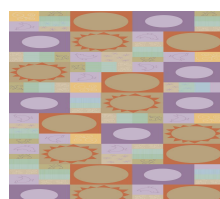


Lilac



Medical Blue

Printed Patterns



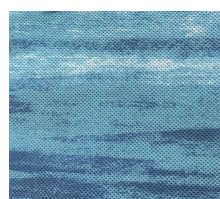
Happy Sun



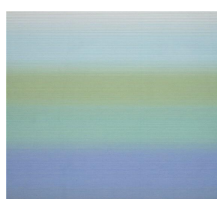
Leaf



Floret



Beach



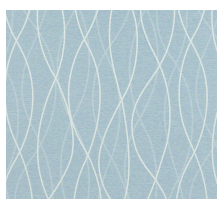
Ocean Mist



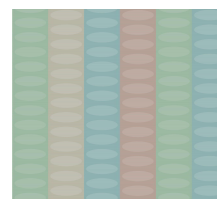
Dancing Leaves



Fern



Lines



Circles

* Don't meet your needs?

We can provide personalized customization services
Share your requirements with us promptly, and
we will assist you with professionalism and sincerity!





www.zunlimedical.com

TEL:
+86-512-82068899

E-mail:
info@zunlimedical.com

Headquarters:
No. 101, Building 8, Max Park,
Wujiang District, Suzhou, Jiangsu.



DISPOSABLE CURTAIN



Fire Retardant



Antibacterial

DATE OF INSTALLATION

DATA

MONTH

YEAR

/

/



www.zunlimedical.com



info@zunlimedical.com



+86-512-82068899



MAX Park Building 8

Wujiang District, Suzhou

Jiangsu Province, China